



# Light your own way

with JEMPERLI



Not an actual patient taking JEMPERLI.

**JEMPERLI + carboplatin and paclitaxel (CP):**  
The **FIRST AND ONLY FDA-approved** immunotherapy combination  
proven to help patients with newly-diagnosed advanced or  
returned endometrial cancer **LIVE LONGER\***

\*In the overall study population, median overall survival (OS) with JEMPERLI + CP was 45 months vs 28 months with CP alone. This difference is statistically significant, which means that the difference between the two treatment groups is greater than what might be expected by chance alone. Median (MEE-de-un) is the middle value in a set of measurements. OS measures the average length of time patients are alive after the start of treatment. JEMPERLI + CP was not studied in comparison to other immunotherapy combinations.

## Approved Uses

JEMPERLI is a prescription medicine used to treat adults with:

- a kind of uterine cancer called endometrial cancer (EC)
  - JEMPERLI may be used in combination with the chemotherapy medicines, carboplatin and paclitaxel, and then after that JEMPERLI may be used alone:
    - when your cancer has spread outside your uterus (advanced) **or**,
    - your cancer has returned.
  - JEMPERLI may be used alone:
    - when a laboratory test shows that your tumor is mismatch repair deficient (dMMR), **and**
    - your cancer has returned, or it has spread (advanced EC), **and**
    - you have received chemotherapy that contains platinum and it did not work or is no longer working, **and**
    - your cancer cannot be treated by surgery or radiation.

It is not known if JEMPERLI is safe and effective in children.

## Important Safety Information

JEMPERLI is a medicine that may treat certain cancers by working with your immune system. JEMPERLI can cause your immune system to attack normal organs and tissues in any area of your body and can affect the way they work. These problems can sometimes become severe or life-threatening and can lead to death. You can have more than one of these problems at the same time. These problems may happen anytime during treatment or even after your treatment has ended.

Please see additional Important Safety Information on the next pages and full [Prescribing Information](#), including [Medication Guide](#), also available at [JEMPERLI.com](https://www.jemperli.com).

**Jemperli**   
(dostarlimab-gxly) Injection 500 mg



# Table of Contents

<b><u>How JEMPERLI works</u></b> .....3	<b><u>JEMPERLI alone</u></b> .....14
<b><u>Biomarker testing</u></b> .....4	• <u>Study results</u>
<b><u>JEMPERLI in combination with the chemotherapy medicines, carboplatin and paclitaxel (CP)</u></b> .....6	• <u>Side effects</u>
• <u>How JEMPERLI was studied</u>	• <u>Dosing</u>
• <u>Study results</u>	<b><u>Reimbursement support</u></b> .....19
• <u>Side effects</u>	
• <u>Dosing</u>	

## Important Safety Information (cont'd)

Call or see your healthcare provider (HCP) right away if you develop any new or worsening signs or symptoms, including:

**Lung problems.** Signs and symptoms may include cough, shortness of breath, or chest pain.

Please see additional Important Safety Information on the next pages and full [Prescribing Information](#), including [Medication Guide](#), also available at [JEMPERLI.com](http://JEMPERLI.com).

**Jemperli**   
(dostarlimab-gxly) Injection 500 mg

# JEMPERLI is an IMMUNOTHERAPY, a treatment that is not chemotherapy or radiation, but is designed to work with the body to help fight cancer



Hidden cancer cells

## **Cancer cells can hide**

from your immune system.  
Cells are then able to grow  
and spread



Exposed cancer cells

## **JEMPERLI may prevent cancer cells from hiding**

so your immune system can find  
and attack them

## **Important Safety Information (cont'd)**

**Call or see your healthcare provider (HCP) right away if you develop any new or worsening signs or symptoms, including (cont'd):**

**Intestinal problems.** Signs and symptoms may include diarrhea or more bowel movements than usual; stools that are black, tarry, sticky, or have blood or mucus; or severe stomach-area (abdomen) pain or tenderness.

Please see additional Important Safety Information on the next pages and full [Prescribing Information](#), including [Medication Guide](#), also available at [JEMPERLI.com](http://JEMPERLI.com).

[Table of Contents](#)

**Jemperli**   
(dostarlimab-gxly) Injection 500 mg

# Biomarker testing can provide important information about your disease

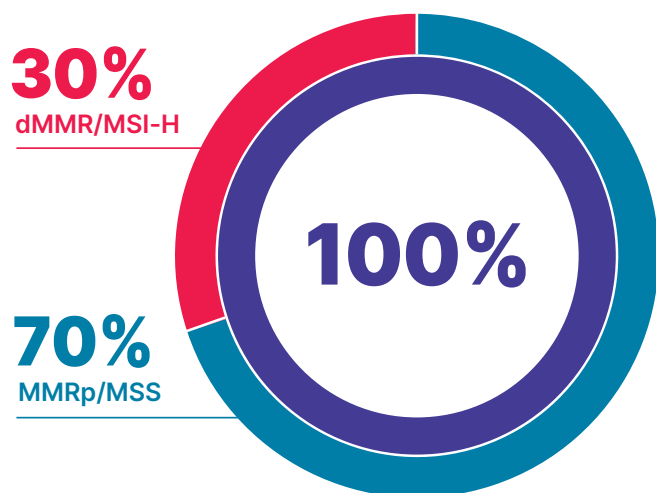
Biomarkers are molecules found in tissues or fluids of your body that show if a condition, process, or disease is normal or abnormal. During normal cell growth, the mismatch repair (MMR) system corrects mistakes that occur in genes. In endometrial cancer, MMR and MSI are biomarker tests that can provide important information about your disease.

If the MMR system is working properly, errors are corrected and the genes remain stable.  
This is also known as:

- MMRp (mismatch repair proficient)
- OR
- MSS (microsatellite stable)

If the MMR system is not working properly, errors build up, making the genes unstable.  
This is also known as:

- dMMR (mismatch repair deficient)
- OR
- MSI-H (microsatellite instability-high)



National guidelines recommend testing your MMR/MSI status if you have endometrial cancer

Ask your doctor for information on biomarker testing.

dMMR/MSI-H status may be associated with Lynch syndrome, an inherited condition that increases the risk of developing endometrial cancer.

## Important Safety Information (cont'd)

**Call or see your healthcare provider (HCP) right away if you develop any new or worsening signs or symptoms, including (cont'd):**

**Liver problems.** Signs and symptoms may include yellowing of your skin or the whites of your eyes, severe nausea or vomiting, pain on the right side of your stomach area (abdomen), dark urine (tea colored), or bleeding or bruising more easily than usual.

Please see additional Important Safety Information on the next pages and full [Prescribing Information](#), including [Medication Guide](#), also available at [JEMPERLI.com](http://JEMPERLI.com).

[Table of Contents](#)

**Jemperli**   
(dostarlimab-gxly) Injection 500 mg



# How have you been prescribed JEMPERLI?

See how it may help you, depending on where you are in your endometrial cancer journey



*If you are a patient with newly-diagnosed advanced or returned endometrial cancer, you may have been prescribed:*

**JEMPERLI + carboplatin and paclitaxel (CP)**  
every 3 weeks for the first 6 doses, and then  
JEMPERLI alone every 6 weeks thereafter

[Click here](#)



*If you are a patient with dMMR advanced or returned endometrial cancer, you may have been prescribed:*

**JEMPERLI alone**  
every 3 weeks for the first 4 doses, and every 6  
weeks thereafter

[Click here](#)

Not actual patients taking JEMPERLI.



**If you have not yet been prescribed JEMPERLI, talk to your doctor to see if it may be an option for you**

## Important Safety Information (cont'd)

**Call or see your healthcare provider (HCP) right away if you develop any new or worsening signs or symptoms, including (cont'd):**

**Hormone gland problems.** Signs and symptoms may include headaches that will not go away or unusual headaches, eye sensitivity to light, eye problems, rapid heartbeat, increased sweating, extreme tiredness, weight gain or weight loss, feeling more hungry or thirsty than usual, urinating more often than usual, hair loss, feeling cold, constipation, your voice gets deeper, dizziness or fainting, changes in mood or behavior such as decreased sex drive, irritability, or forgetfulness.

Please see additional Important Safety Information on the next pages and full [Prescribing Information](#), including [Medication Guide](#), also available at [JEMPERLI.com](http://JEMPERLI.com).

[Table of Contents](#)

**Jemperli**   
(dostarlimab-gxly) Injection 500 mg



## **JEMPERLI in combination with the chemotherapy medicines, carboplatin and paclitaxel (CP)**

Not an actual patient taking JEMPERLI.

### **Important Safety Information (cont'd)**

**Call or see your healthcare provider (HCP) right away if you develop any new or worsening signs or symptoms, including (cont'd):**

**Kidney problems.** Signs and symptoms may include change in the amount or color of your urine, blood in your urine, swelling in your ankles, or loss of appetite.

Please see additional Important Safety Information on the next pages and full [Prescribing Information](#), including [Medication Guide](#), also available at [JEMPERLI.com](https://www.jemperli.com).

[Table of Contents](#)

**Jemperli**   
(dostarlimab-gxly) Injection 500 mg





I have been prescribed **JEMPERLI** in combination with CP

## How JEMPERLI was studied in patients like you

A clinical trial compared JEMPERLI + CP versus CP alone in 494 people with endometrial cancer that had spread outside the uterus (newly-diagnosed advanced) or returned, also known as the overall population. The overall population included people whose tumors were either dMMR/MSI-H or MMRp/MSS.



### Study participants taking JEMPERLI + CP received:

500 mg of JEMPERLI + CP every 3 weeks for 6 doses  
Then 1000 mg of JEMPERLI alone every 6 weeks



### Study participants taking CP alone received:

CP + placebo (an inactive substance designed to look like the medicine being tested) every 3 weeks for 6 doses  
Then placebo alone every 6 weeks

### Why this may be important to you

The clinical trial tested the effectiveness and safety of adding JEMPERLI to CP. The trial treated some patients with JEMPERLI + CP and others with a placebo (an inactive substance) + CP and then compared the results. Based on the results of this trial, this combination of medications was approved by the U.S. Food and Drug Administration (FDA) and made available for doctors to prescribe to patients.

## Important Safety Information (cont'd)

**Call or see your healthcare provider (HCP) right away if you develop any new or worsening signs or symptoms, including (cont'd):**

**Skin problems.** Signs and symptoms may include rash; itching; skin blistering or peeling; swollen lymph nodes; painful sores or ulcers in your mouth or in your nose, throat, or genital area; fever or flu-like symptoms.

Please see additional Important Safety Information on the next pages and full [Prescribing Information](#), including [Medication Guide](#), also available at [JEMPERLI.com](https://www.jemperli.com).

[Table of Contents](#)

**Jemperli**   
(dostarlimab-gxly) Injection 500 mg



## People receiving JEMPERLI + CP with newly-diagnosed advanced or returned endometrial cancer LIVED LONGER

**Overall survival (OS):** The average length of time patients are alive after the start of treatment.

In the overall study population, median OS with JEMPERLI + CP was 45 months vs 28 months with CP alone. This difference is statistically significant, which means that the difference between the two treatment groups is greater than what might be expected by chance alone. Results varied among different biomarker groups within the overall population. Median is the middle value in a set of measurements. JEMPERLI + CP was not studied in comparison to other immunotherapy combinations.

### JEMPERLI + CP significantly extended OS



**Significant**

**31%**

**lower risk of death**

**in those receiving JEMPERLI + CP  
compared to CP alone**

136 out of 245 participants treated with JEMPERLI + CP were still alive, compared with 105 out of 249 treated with CP alone.

**OS is the GOLD  
STANDARD measure  
for cancer clinical trials**

**JEMPERLI + CP has achieved that OS  
gold standard measure by showing  
a treatment benefit in OS.**

### Important Safety Information (cont'd)

**Problems can also happen in other organs and tissues. These are not all of the signs and symptoms of immune system problems that can happen with JEMPERLI. Call or see your HCP right away for any new or worse signs or symptoms.**

Please see additional Important Safety Information on the next pages and full [Prescribing Information](#), including [Medication Guide](#), also available at [JEMPERLI.com](http://JEMPERLI.com).

[Table of Contents](#)

**Jemperli**   
(dostarlimab-gxly) Injection 500 mg



## People taking JEMPERLI + CP lived a median of 16 MONTHS LONGER than those taking CP alone

**Overall survival (OS):** The average length of time patients are alive after the start of treatment.

Median is the middle value in a set of measurements.

### Median OS:



### Important Safety Information (cont'd)

**Problems can also happen in other organs and tissues. These are not all of the signs and symptoms of immune system problems that can happen with JEMPERLI. Call or see your HCP right away for any new or worse signs or symptoms (cont'd).** Signs and symptoms may include chest pain, irregular heartbeat, shortness of breath, swelling of ankles; confusion, sleepiness, memory problems, changes in mood or behavior, stiff neck, balance problems, tingling or numbness of the arms or legs; double vision, blurry vision, sensitivity to light, eye pain, changes in eyesight; persistent or severe muscle pain or weakness, muscle cramps; low red blood cells, bruising.

Please see additional Important Safety Information on the next pages and full [Prescribing Information](#), including [Medication Guide](#), also available at [JEMPERLI.com](http://JEMPERLI.com).

[Table of Contents](#)

**Jemperli**   
(dostarlimab-gxly) Injection 500 mg



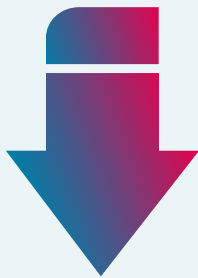


## Patients receiving JEMPERLI + CP were significantly less likely to have their cancer grow, spread, or get worse compared to CP alone

**Progression-free survival (PFS):** Measures a delay or pause in disease progression or refers to the length of time that study participants experienced without their cancer growing, spreading, or getting worse.

In the overall study population, participants receiving JEMPERLI + CP experienced a median of 12 months without their cancer growing, spreading, or getting worse, compared with 8 months for those on CP alone. This difference is statistically significant, which means that the difference between the two treatment groups is greater than what might be expected by chance alone. Results varied among different biomarker groups within the overall population. Median is the middle value in a set of measurements.

### Study participants receiving JEMPERLI + CP were:



# 36% LESS LIKELY

to have their cancer grow, spread, or get worse  
compared with those receiving CP alone

110 out of 245 participants treated with JEMPERLI + CP didn't experience their cancer growing, spreading, or getting worse, compared with 72 out of 249 treated with CP alone.

### Important Safety Information (cont'd)

**Infusion reactions that can sometimes be severe or life-threatening.** Signs and symptoms of infusion reactions may include chills or shaking, itching or rash, flushing, shortness of breath or wheezing, dizziness, feel like passing out, fever, back or neck pain.

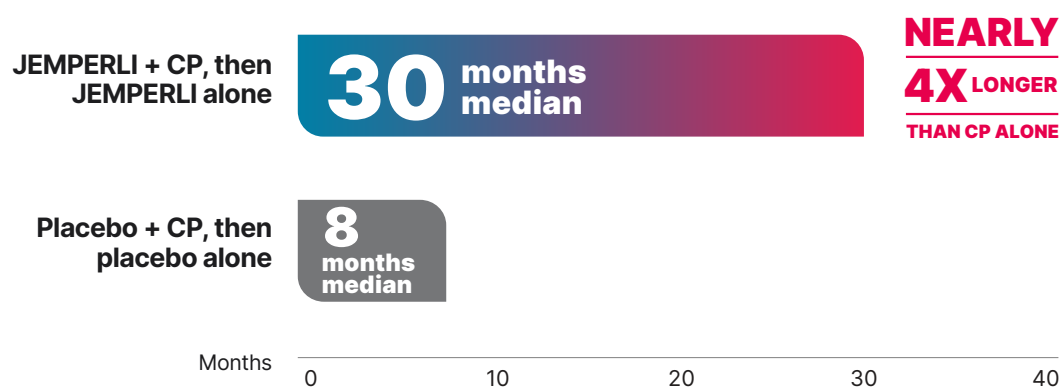
**Rejection of a transplanted organ.** Your HCP should tell you what signs and symptoms you should report and monitor you, depending on the type of organ transplant that you have had.

Please see additional Important Safety Information on the next pages and full [Prescribing Information](#), including [Medication Guide](#), also available at [JEMPERLI.com](http://JEMPERLI.com).



## People with dMMR/MSI-H biomarker status taking JEMPERLI + CP experienced a median of 30 months without their cancer growing, spreading, or getting worse

The JEMPERLI clinical trial also measured median progression-free survival (PFS) in people with dMMR/MSI-H tumors. PFS is the length of time that participants experienced without their cancer growing, spreading, or getting worse. Median is the middle value in a set of measurements.



37 out of 60 participants treated with JEMPERLI + CP didn't experience their cancer growing, spreading, or getting worse, compared with 15 out of 62 treated with CP alone.



Study participants receiving JEMPERLI + CP were **71% less likely to have their cancer grow, spread, or get worse** compared with those receiving CP alone.

### Important Safety Information (cont'd)

**Complications, including graft-versus-host-disease (GVHD), in people who have received a bone marrow (stem cell) transplant that uses donor stem cells (allogeneic).** These complications can be serious and can lead to death. These complications may happen if you underwent transplantation either before or after being treated with JEMPERLI. Your HCP will monitor you for these complications.

Please see additional Important Safety Information on the next pages and full [Prescribing Information](#), including [Medication Guide](#), also available at [JEMPERLI.com](https://www.jemperli.com).



*I have been prescribed **JEMPERLI** in combination with CP*

## You may experience side effects from JEMPERLI

Call or see your healthcare provider right away if you develop any new or worsening signs or symptoms, including:

### Immune system problems

- Lung problems, like cough or shortness of breath
- Intestinal problems, like diarrhea or more bowel movements than usual or severe stomach-area (abdomen) pain or tenderness
- Liver problems, like yellowing of your skin or the whites of your eyes
- Hormone gland problems, like headaches that will not go away or unusual headaches, or eye sensitivity to light
- Kidney problems, like swelling in your ankles or blood in your urine
- Skin problems, like rash or itching
- Problems in other organs and tissues, with symptoms including chest pain, persistent or severe muscle pain or weakness, or double vision

### Other problems

- Infusion reactions that can sometimes be severe or life-threatening, with symptoms including chills or shaking, dizziness, or shortness of breath or wheezing
- Rejection of a transplanted organ
- Complications, including graft-versus-host disease (GVHD), in people who have received a bone marrow (stem cell) transplant that uses donor stem cells (allogeneic)

In study participants receiving JEMPERLI + CP, 19% stopped taking JEMPERLI completely and 37% had their treatment interrupted due to side effects.



To learn more about these side effects, talk to your doctor or visit [JEMPERLI.com](https://www.jemperli.com)

**The most common side effects of JEMPERLI + CP** are nerve problems in your arms, hands, legs, and feet; tiredness; nausea; hair loss; joint pain; rash; constipation; diarrhea; stomach-area (abdomen) pain; shortness of breath; decreased appetite; urinary tract infections; vomiting.

These are not all of the possible side effects of JEMPERLI.

Please see additional Important Safety Information on the next pages and full [Prescribing Information](#), including [Medication Guide](#), also available at [JEMPERLI.com](https://www.jemperli.com).

[Table of Contents](#)

**Jemperli**   
(dostarlimab-gxly) Injection 500 mg



I have been prescribed **JEMPERLI** in combination with CP

## What you may expect when starting JEMPERLI

JEMPERLI-based combination treatment in newly-diagnosed advanced or returned endometrial cancer includes JEMPERLI + CP every 3 weeks for the first 6 doses, after which you will receive JEMPERLI alone every 6 weeks.

### Your care team is ready to help

Beginning any cancer treatment can bring uncertainty. Fortunately, you can rely on your care team for guidance throughout your journey. You may also want to review the information below to help you feel more prepared.

### How JEMPERLI is given

**JEMPERLI is given through an intravenous (IV) infusion.** The medical staff will prepare the medicine and then the IV infusion should take about 30 minutes. See below for more details.



Your JEMPERLI infusion will take about 30 minutes

FOR THE FIRST 6 DOSES

EVERY **3** WEEKS



+



JEMPERLI

CP

STARTING WITH THE 7TH DOSE  
AND BEYOND

EVERY **6** WEEKS



JEMPERLI  
alone



Not an actual patient taking JEMPERLI.

## Important Safety Information

**Getting medical treatment right away may help keep these problems from becoming more serious.** Your HCP will check you for these problems during treatment with JEMPERLI and may treat you with corticosteroid or hormone replacement medicines. If you have severe side effects, your HCP may also need to delay or completely stop treatment with JEMPERLI.

Please see additional Important Safety Information on the next pages and full [Prescribing Information](#), including [Medication Guide](#), also available at [JEMPERLI.com](https://www.jemperli.com).

Table of Contents

**Jemperli**   
(dostarlimab-gxly) Injection 500 mg





**JEMPERLI alone**

Not an actual patient taking JEMPERLI.

## Important Safety Information (cont'd)

**Before receiving JEMPERLI, tell your HCP about all of your medical conditions, including** immune system problems such as Crohn's disease, ulcerative colitis, or lupus; received an organ transplant; have received or plan to receive a stem cell transplant that uses donor stem cells (allogeneic); have received radiation treatment to your chest area; have a condition that affects your nervous system, such as myasthenia gravis or Guillain-Barré syndrome.

Please see additional Important Safety Information on the next pages and full [Prescribing Information](#), including [Medication Guide](#), also available at [JEMPERLI.com](http://JEMPERLI.com).

[Table of Contents](#)

**Jemperli**   
(dostarlimab-gxly) Injection 500 mg



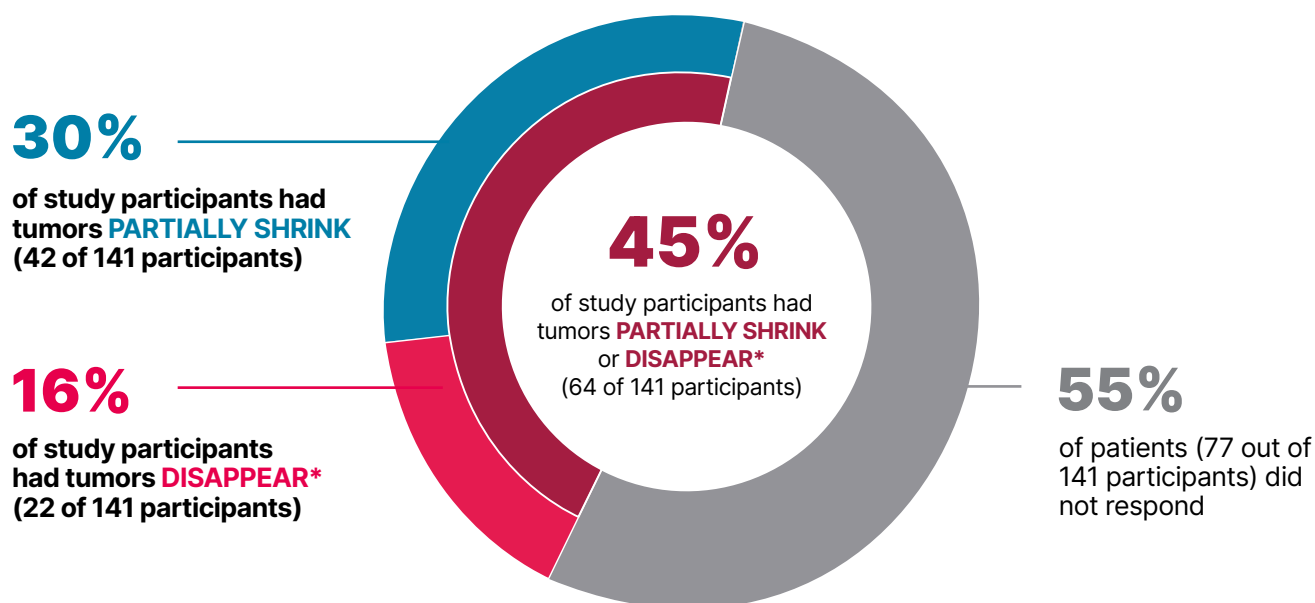


## JEMPERLI offers meaningful results

Researchers studied how JEMPERLI works in 141 study participants with dMMR endometrial cancer that had spread (advanced) or returned. These people had previously received chemotherapy containing platinum that did not work or stopped working.

**Objective response rate (ORR):** The percentage of people in a study whose tumors partially shrink or disappear in response to the treatment within a certain period of time.

Many study participants receiving JEMPERLI alone had their tumors partially shrink or disappear\*



\*This does not always mean that the cancer has been cured.

### Important Safety Information (cont'd)

**If you are pregnant or plan to become pregnant, tell your HCP.** JEMPERLI can harm your unborn baby. If you are able to become pregnant, your HCP will give you a pregnancy test before you start treatment. Use an effective birth control method during treatment and for 4 months after your last dose of JEMPERLI. Tell your HCP right away if you become pregnant or think you may be pregnant during treatment with JEMPERLI.

Please see additional Important Safety Information on the next pages and full [Prescribing Information](#), including [Medication Guide](#), also available at [JEMPERLI.com](http://JEMPERLI.com).



## Many participants in the study had a continued duration of response (DOR) with JEMPERLI

**Duration of response (DOR):** The amount of time before cancer began growing or spreading again for study participants who responded to treatment.



**86%**

of study participants who responded to treatment kept their response for **1 YEAR OR LONGER**



**55%**

of study participants who responded to treatment kept their response for **LONGER THAN 2 YEARS**

In study participants with tumors that responded to treatment, their DOR **ranged from 1.2+ to 52.8+ months** with the median DOR not reached. Median follow-up time was 27.9 months. Median is the middle value in a set of measurements. Follow-up time is the length of time a person's health has been monitored.

+ means still responding at last follow-up visit.

### Important Safety Information (cont'd)

If you are breastfeeding or plan to breastfeed, tell your HCP. It is not known if JEMPERLI passes into your breast milk. Do not breastfeed during treatment with JEMPERLI and for 4 months after your last dose.

**Tell your HCP about all the medicines you take**, including prescription and over-the-counter medicines, vitamins, and herbal supplements.

Please see additional Important Safety Information on the next pages and full [Prescribing Information](#), including [Medication Guide](#), also available at [JEMPERLI.com](http://JEMPERLI.com).

[Table of Contents](#)

**Jemperli**   
(dostarlimab-gxly) Injection 500 mg



*I have been prescribed  
JEMPERLI alone*

## You may experience side effects when taking JEMPERLI

Call or see your healthcare provider right away if you develop any new or worsening signs or symptoms, including:

### Immune system problems

- Lung problems, like cough or shortness of breath
- Intestinal problems, like diarrhea or more bowel movements than usual or severe stomach-area (abdomen) pain or tenderness
- Liver problems, like yellowing of your skin or the whites of your eyes
- Hormone gland problems, like headaches that will not go away or unusual headaches, or eye sensitivity to light
- Kidney problems, like swelling in your ankles or blood in your urine
- Skin problems, like rash or itching
- Problems in other organs and tissues, with symptoms including chest pain, muscle pain or weakness, or double vision

### Other problems

- Infusion reactions that can sometimes be severe or life-threatening, with symptoms including chills or shaking, dizziness, or shortness of breath or wheezing
- Rejection of a transplanted organ
- Complications, including graft-versus-host disease (GVHD), in people who have received a bone marrow (stem cell) transplant that uses donor stem cells (allogeneic)

In study participants receiving JEMPERLI alone, 10% stopped taking JEMPERLI completely, and 28% had their treatment interrupted due to side effects.

**The most common side effects of JEMPERLI when given alone were** tiredness and weakness, low red blood cell count (anemia), diarrhea, nausea, constipation, and vomiting.

These are not all of the possible side effects of JEMPERLI.

Please see additional Important Safety Information on the next pages and full [Prescribing Information](#), including [Medication Guide](#), also available at [JEMPERLI.com](https://www.jemperli.com).



To learn more about these side effects, talk to your doctor or visit [JEMPERLI.com](https://www.jemperli.com)

[Table of Contents](#)

**Jemperli**   
(dostarlimab-gxly) Injection 500 mg



I have been prescribed  
**JEMPERLI** alone

## What you may expect when starting JEMPERLI

Beginning any cancer treatment may bring uncertainty. Fortunately, you can rely on your care team for guidance throughout your journey. You may also want to review the information below to help you feel more prepared.

### How JEMPERLI is given

**JEMPERLI is given through an intravenous (IV) infusion.** The medical staff will prepare the medicine and then the IV infusion should take about 30 minutes.

### How often JEMPERLI is given

Remember to **mark your calendar every 3 or 6 weeks**, depending on where you are in your infusion schedule. See below for more details.



Your JEMPERLI infusion will  
take about 30 minutes



Not an actual patient taking JEMPERLI.

## Important Safety Information (cont'd)

**The most common side effects of JEMPERLI when given with carboplatin and paclitaxel** include nerve problems in your arms, hands, legs, and feet; tiredness; nausea; hair loss; joint pain; rash; constipation; diarrhea; stomach-area (abdomen) pain; shortness of breath; decreased appetite; urinary tract infections; vomiting.

Please see additional Important Safety Information on the next pages and full [Prescribing Information](#), including [Medication Guide](#), also available at [JEMPERLI.com](https://www.jemperli.com).

[Table of Contents](#)

**Jemperli**   
(dostarlimab-gxly) Injection 500 mg

# Reimbursement support

**Together with GSK Oncology** may help with:

## Financial Assistance\*

Together with GSK Oncology can identify programs that may be available to help you pay for JEMPERLI:

- Copay assistance for eligible, commercially insured patients who may receive their JEMPERLI for as little as \$0 up to an annual program maximum of \$26,000
- Information about other organizations or independent foundations that may be able to help with JEMPERLI costs

## Patient Assistance Program<sup>1</sup>\*

The GSK Patient Assistance Program is available for patients who meet the eligibility criteria. Approved patients will receive their medication at no cost through the program.

<sup>1</sup>The GSK Patient Assistance Program is operated by the GSK Patient Access Programs Foundation, an independent, non-profit organization separate from GSK.

## Reimbursement Support\*

- Information about insurance coverage and costs for your GSK medicine
- Helping your doctor understand the special steps your insurance company may require before coverage for JEMPERLI can be approved

The information provided by **Together with GSK Oncology** is not a guarantee of coverage

**GSK** **Together with  
GSK Oncology**

Visit [TogetherwithGSKOncology.com](https://togetherwithgskoncology.com)  
or call us at **1-844-4GSK-ONC**  
**(1-844-447-5662)**.

**Support staff are available** from 8 AM to  
8 PM ET to help with your questions.

\*Visit [togetherwithgskoncology.com](https://togetherwithgskoncology.com) for information about eligibility and full program terms and conditions.



**Starting a treatment is a big step, and sometimes you need help. Together with GSK Oncology** is a support program for you and your doctor that may help with access issues related to JEMPERLI.

## Important Safety Information (cont'd)

**The most common side effects of JEMPERLI when used alone** include tiredness and weakness, low red blood cell count (anemia), diarrhea, nausea, constipation, vomiting.

Please see remaining Important Safety Information on the next page, and full [Prescribing Information](#), including [Medication Guide](#), also available at [JEMPERLI.com](https://JEMPERLI.com).

[Table of Contents](#)

**Jemperli**   
(dostarlimab-gxly) Injection 500 mg





Take an active role in your treatment. Ask your doctor about JEMPERLI today.

Visit [JEMPERLI.com](https://JEMPERLI.com)



Not an actual patient taking JEMPERLI.

**JEMPERLI + carboplatin and paclitaxel (CP):**  
The **FIRST AND ONLY FDA-approved** immunotherapy combination proven to help patients with newly-diagnosed advanced or returned endometrial cancer **LIVE LONGER\***

\*In the overall study population, median overall survival (OS) with JEMPERLI + CP was 45 months vs 28 months with CP alone. This difference is statistically significant, which means that the difference between the two treatment groups is greater than what might be expected by chance alone. Median is the middle value in a set of measurements. OS measures the average length of time patients are alive after the start of treatment. JEMPERLI + CP was not studied in comparison to other immunotherapy combinations.

**OS is the GOLD  
STANDARD measure  
for cancer clinical trials**

**JEMPERLI + CP has achieved that OS  
gold standard measure by showing  
a treatment benefit in OS.**

## Important Safety Information (cont'd)

These are not all of the possible side effects of JEMPERLI. Call your doctor for medical advice about side effects.

You are encouraged to report negative side effects of prescription drugs to the FDA. Visit [www.fda.gov/medwatch](https://www.fda.gov/medwatch) or call 1-800-FDA-1088. You may also report negative side effects to GSK at <https://gsk.public.reportum.com> or 1-888-825-5249.

Please see full [Prescribing Information](#), including [Medication Guide](#), also available at [JEMPERLI.com](https://JEMPERLI.com).

### Table of Contents

Trademarks are owned by or licensed to the GSK group of companies.



©2025 GSK or licensor.  
PMUS-DSTBROC250003 March 2025  
Produced in USA.

File Name: Patient Brochure

**Jemperli**   
(dostarlimab-gxly) Injection 500 mg